

PART NUMBER	"A" (HOLE DIAMETER)	"B" (PANEL THICKNESS)	"C"	"D" REF.	"E"	FIGURE
USR 1131	.197 (5.0)	.158-.276 (4.0-7.0)	.472 (12.0)	.433 (11.0)	.153 (3.9)	1.
USR 1132	.236 (6.0)		.630 (16.0)			2.
USR 1133	.315 (8.0)	.118-.394 (3.0-10.0)	.787 (20.0)	.551 (14.0)	.157 (4.0)	3.

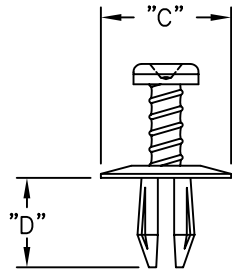
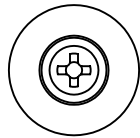


FIG.1.

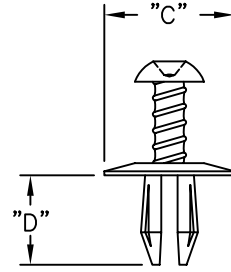
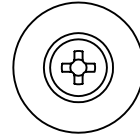


FIG.2.

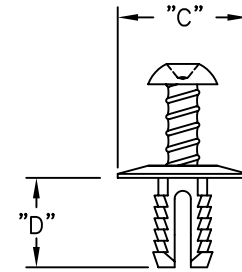
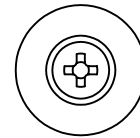
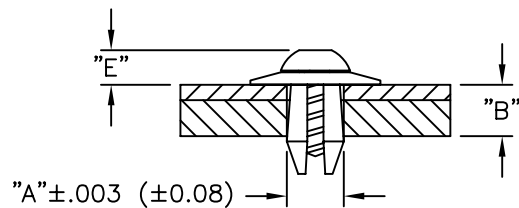


FIG.3.



TYPICAL ASSEMBLY

NOTES:

- MATERIAL: NYLON 6/6 (RMS-115).
- COLOR: BLACK.

TITLE: UNSCREWING SNAP RIVETS			DWG IN IN.(MM)	FINAL	PRINT TYPE
TOLERANCES UNLESS NOTED .XX=±.020 .XXX=±.015 FRAC=1/32 ANG=±1°	FILE # USR MAT'L: SEE NOTES RE: RICHCO INC.	DWN: S.M. DT: 10/30/00	APP: DT:	PART # USR-SERIES	CA
C TABLE CORRECTED SM 01.18.02	B ADDED RMS-115 AND CHANGED FILE NO. S.M 03.29.01	A COMPLETELY RE-DRAWN SM 11.01.00	REV DESCRIPTION ENGR DATE	RICHCO INC. PO BOX 804238, CHICAGO, 60680 (773) 539-4060	